

OUR SPECIALTY
**WORK
BENCHES**
FOR ALL!

sjobergs.se

nordic pro 1400

SJÖBERGS NORDIC PRO 1400 BEECH
Nr 33338

SPECIFICATIONS	inches	mm
Length of bench top	50 ^{63/64}	1295
Total length	56 ^{1/16}	1424
Width	19 ^{21/32}	500
Total width	24 ^{3/4}	630
Thickness of worktop	1 ^{1/8}	28
Working height	35 ^{7/16}	900
Weight	92 lbs	42 kg

CUPBOARD SM03	Nr 33457	
Width	40 ^{15/16}	1040
Height	16 ^{1/8}	410
Weight	55 lbs	25 kg

CUPBOARD SM07	Nr 33273	
Width	40 ^{15/16}	1040
Height	16 ^{1/8}	410
Weight	48 lbs	21 kg

SJÖBERGS NORDIC PRO 1400+SM03

Nr 35025 EAN 7316705025105

Our popular SJÖBERGS NORDIC 1450 is the predecessor to this new model that has been given the name NORDIC PRO 1400. A stable, robust and flexible bench in massive beech with different options to assemble both vises to suit left and right handed.

The perfect bench for you with high demands on your workbench and for you with a limited space in your workshop.

All dog holes in the top of the bench enable endless opportunities to clamp different objectives, from thin and irregular components to larger items that require several points of clamping.



Package size NORDIC PRO 1400, 1650x665x98 mm
Package size SM03, 1060x505x107 mm
Package size SM07, 1055x500x93 mm

SJÖBERGS NORDIC PRO 1400



Nr 33338

EAN 7316703338108

SJÖBERGS NORDIC PRO 1400+SM07



Nr 35026

EAN 7316705026102

FOR LEFT AND RIGHT HANDED USE!



ST03 HOLDFAST



Nr 33637
2-pack

EAN 7316703637034

SM03



Nr 33457

EAN 7316703457038

SM07



Nr 33273

EAN 7316703273072

JAW CUSHIONS



Nr 33381

EAN 7316703381104

ST11 HOLDFAST



Nr 33639

EAN 7316703639113

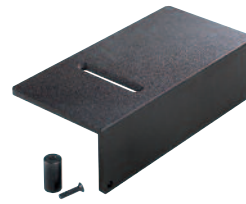
BENCH DOGS



Nr 33290 4-pack

EAN 7316703290345

UNIVERSAL ANVIL



Nr 33617

EAN 7316703617104

FILE CLAMP



Nr 33492

EAN 7316703492107



SJÖBERGS WORKBENCHES AB
SE- 576 95 Stockaryd • Sweden
Tel +46 (0)382-257 00
office@sjobergs.se • sjobergs.se

