

OUR SPECIALTY
**WORK
BENCHES**
FOR ALL!

sjobergs.se

kvadrat

SPECIFICATIONS	inches	mm
Nr 33072		
Length of bench top	50 ^{5/8}	1285
Total length	61 ^{5/8}	1565
Width of bench top	50 ^{5/8}	1285
Total width	61 ^{5/8}	1565
Thickness of worktop	2 ^{23/64}	60
Thickness of skirt	2 ^{23/64}	60
Vise capacity	5 ^{1/8}	130
Working height	27 ^{2/3} –35 ^{1/2}	700–900
Total weight	297 lbs	135 kg

KVADRAT CONSISTS OF:

- 1 x 33797 TOP
- 1 x 33198 STEEL STAND
- 1 x 33183 ADDITIONAL BOARD
- 4 x 33200 HINGED STOOL
- 1 x 33142 GAS SPRINGS
- 4 x 33383 JAW CUSHIONS, pair
- 4 x 33636 HOLDFAST
- 4 x 33290 BENCH DOGS, pair

KVADRAT

Nr 33072



NR 33072

SJÖBERGS KVADRAT

Lacquered beech. The external dimensions of the Kvadrat are 1300x1300x60 mm.

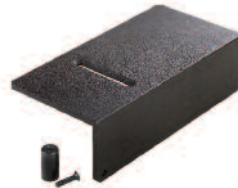
The top is supplied with a double row of holes for the round bench dogs to provide more flexible clamping. Height adjustable steel stand for the 4-group version, 700–900 mm. Trestle in zinc coated steel.

BENCH DOGS



Nr 33290 4-pack

UNIVERSAL ANVIL



Nr 33617

HINGED STOOL



Nr 33200

HYDRAULIC LIFT



Nr 33795

GAS SPRINGS



Nr 33142 4-pack

ADDITIONAL BOARD



Nr 33183

FILE CLAMP



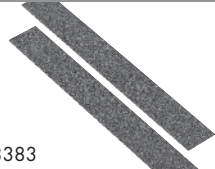
Nr 33492

HOLDFAST



Nr 33636

JAW CUSHIONS FRONT VISE



Nr 33383
SUPPORT

Nr 33315 4-pack

TABLE VISE WITH ANVIL



Nr 33425

TABLE VISE HOLDER



Nr 33420



SJÖBERGS WORKBENCHES AB
SE- 576 95 Stockaryd • Sweden
Tel +46 (0)382-257 00
office@sjobergs.se • sjobergs.se

