

OUR SPECIALTY
**WORK
BENCHES**
FOR ALL!

sjobergs.se

SJÖBERGS SEWING MACHINE TABLE

Nr 333065

sjobergs sewing machine table, light gray virrvarr



SJÖBERGS SEWING MACHINE TABLE is used for functional sewing and sewing machine stowage. The table can also be used for other work. The table has a laminated top with Sigvard Bernadotte's well-known Virrvarr pattern from 1958. Available in a choice of two colours.

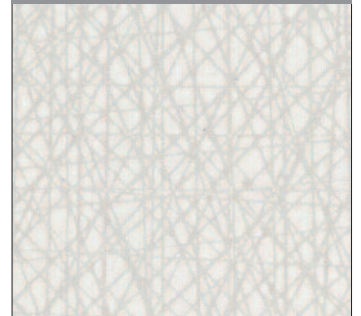
SPECIFICATIONS	mm
SEWING MACHINE TABLE	
Nr 33065	
Length of top	1200
Width of top	600
Height with top	900
Weight	48 kg

NR 33065

SEWING MACHINE TABLE CONSISTS OF:

- 1 x 33215 TOP LIGHT LAMINATE
- 1 x 33216 TRESTLE
- 1 x 33212 CABLE TRAY
- 1 x 33213 ELECTRICAL

VIRRVARR LIGHT LAMINATE



SEWING MACHINE TABLE



No/Nr 33065

CHAIR



No/Nr 33209

CABLE TRAY



No/Nr 33212

ELECTRICAL BOX



No/Nr 33213



SJÖBERGS WORKBENCHES AB
SE- 576 95 Stockaryd • Sweden
Tel +46 (0)382-257 00
office@sjobergs.se • sjobergs.se

